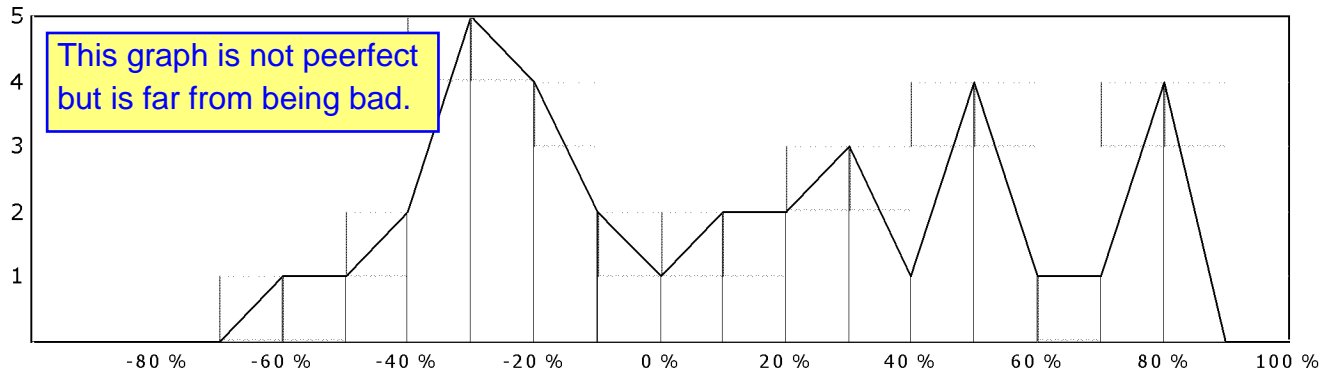


Position Trade Efficiencies**Position Details****Position 1 - Short X 1000 Units**

	Price	Bar	Date	Efficiency	Commission	Value
Opening	\$69.1625	18	8/16/2007	63.61 %	\$10.00	\$69152.45
Closing	\$70.6113	20	8/20/2007	20.82 %	\$10.00	\$70621.30
Total				-15.56 %		\$-1468.85
	Price	Bar	Profit			
Most Favorable	\$63.2400	18	\$5902.45			
Most Adverse	\$72.5500	20	\$-3407.55			

Position 2 - Long X 1000 Units

	Price	Bar	Date	Efficiency	Commission	Value
Opening	\$81.6663	23	8/23/2007	95.22 %	\$10.00	\$81676.30
Closing	\$98.6045	57	10/11/2007	90.42 %	\$10.00	\$98594.50
Total				85.63 %		\$16918.20
	Price	Bar	Profit			
Most Favorable	\$100.5000	56	\$18813.70			
Most Adverse	\$80.7200	23	\$-966.30			

Position 3 - Short X 1000 Units

	Price	Bar	Date	Efficiency	Commission	Value
Opening	\$83.6397	104	12/18/2007	51.39 %	\$10.00	\$83629.70
Closing	\$85.5255	110	12/27/2007	17.75 %	\$10.00	\$85535.50
Total				-30.86 %		\$-1905.80
	Price	Bar	Profit			
Most Favorable	\$80.5000	108	\$3119.70			
Most Adverse	\$86.6100	110	\$-2990.30			

Position 4 - Short X 1000 Units

	Price	Bar	Date	Efficiency	Commission	Value
Opening	\$85.4606	111	12/28/2007	72.04 %	\$10.00	\$85450.55
Closing	\$85.0732	112	12/31/2007	42.42 %	\$10.00	\$85083.25
Total				14.45 %		\$367.30
	Price	Bar	Profit			
Most Favorable	\$83.5300	112	\$1910.55			